

Single use only

This convenience kit is for intramuscular and subcutaneous use only

For use by licensed health care professionals authorized to administer prescription medication.

Not for intravenous or ophthalmic use.

Store between 20-25°C (68 to 77°F) [See USP Controlled Room Temperature].

Epinephrine is light sensitive. Protect from light and freezing. Do not store epinephrine outside of this protective carton.

Indication and Use

Anaphylaxis: Emergency treatment of allergic reactions (Type I), including anaphylaxis, which may result from insect stings or bites, foods, drugs, sera, diagnostic testing substances and other allergens, as well as idiopathic anaphylaxis or exercise-induced anaphylaxis.

Dosage and Administration

Always follow the epinephrine manufacturers information and your prescriber's order for dosing epinephrine in allergic reactions (Type 1) and anaphylaxis.

Anaphylaxis:

Adults and Children 30 kg (66 lbs) or more: 0.3 to 0.5 mg (0.3 to 0.5 mL) of undiluted epinephrine 1mg/ mL (1:1000) administered intramuscularly or subcutaneously in the anterolateral aspect of the thigh, up to a maximum of 0.5 mg (0.5 mL) per injection, repeated every 5 to 10 minutes as necessary. Monitor clinically for reaction severity and cardiac effects.

Children 30 kg (66 lbs) or less: 0.01 mg/kg (0.01 mL/kg) of undiluted epinephrine 1 mg/ mL (1:1000) administered intramuscularly or subcutaneously in the anterolateral aspect of the thigh, up to a maximum of 0.3 mg (0.3 mL) per injection, repeated every 5 to 10 minutes as necessary. Monitor clinically for reaction severity and cardiac effects.

General Considerations

Inspect visually for particulate matter and discoloration prior to administration; solution should be clear and colorless. Do not use if the solution is colored or cloudy, or if it contains particulate matter.

Inject epinephrine 1 mg/ mL (1:1000) intramuscularly or subcutaneously into the anterolateral aspect of the thigh, through clothing if necessary. When administering to a child, to minimize the risk of injection related injury, hold the leg firmly in place and limit movement prior to and during an injection.

The injection may be repeated every 5 to 10 minutes as necessary. For intramuscular administration, ensure the injection is administered into the muscle.

Monitor the patient clinically for the severity of the allergic reaction and potential cardiac effects of the epinephrine and repeat as needed.

Do not administer repeated injections at the same site, as the resulting vasoconstriction may cause tissue necrosis.

See enclosed epinephrine information sheet for full prescribing information including, contraindications, warnings, precautions, adverse reactions, drug interactions, use in specific populations, overdose, full product description and clinical pharmacology.

This is a single use kit. Discard all unused contents within 30 minutes of entering epinephrine vial.

Discard kit and any unused epinephrine in the appropriate sharps/ medical waste containers according to the rules and laws in your area.

Each EpinephrineSnap® kit contains

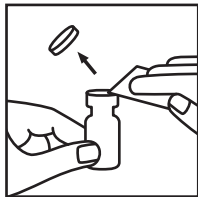
- (1) Vial of epinephrine injection 1 mg/ mL 1:1000 for intramuscular or subcutaneous use
- (4) Alcohol Prep Pads
- (3) 23-gauge 1-inch safety needles
- (3) 1 mL Luer Lock Syringes with non-residue gasket for minimal dead space
- (1) Epinephrine Product Information Sheet
- (1) Instructions For Use card

Instructions for Use

Remove inner tray from outer carton, place on a flat surface. Remove the epinephrine vial. Inspect the epinephrine vial for particulate matter and discoloration prior to administration. Do not use if the solution is colored or cloudy or contains particulate matter.

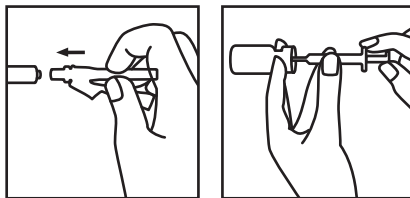
Snap off the lid of the epinephrine vial and wipe the rubber stopper with an alcohol prep pad.

Remove the safety needles and the syringe.



Attach a safety needle to a syringe and twist in place. Withdraw air into syringe equal to the desired dose. Insert

needle through the rubber stopper of the epinephrine vial, injecting the air, and then withdrawing a single dose.



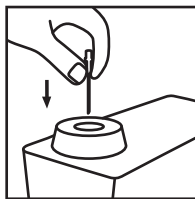
Prepare to administer the subcutaneous or intramuscular injection. The preferred site of epinephrine administration is the anterolateral aspect of the thigh because of its location, size, and available blood flow. When injecting, lift the vastus lateralis muscle away from the bone.

Cleanse the site of administration with an alcohol pad prior to injection, however, epinephrine may be injected through clothing if necessary.

Do not inject into the buttocks, digits, hands, or feet.

If the patient's symptoms of anaphylaxis persist, epinephrine dosing may be repeated every 5 to 10 minutes.

Do not administer repeat injections at the same site as the resulting vasoconstriction will cause tissue necrosis.



Any unused epinephrine either in the vial or syringe must be discarded within 30 minutes after entering the epinephrine vial.

See the enclosed epinephrine full prescribing information.

You are encouraged to report negative side effects of prescription drugs to the FDA. Visit [fda.gov/safety/medwatch/](https://www.fda.gov/safety/medwatch/) or call 1-800-FDA-1088.

To learn more about our products, go to <https://snapmedicalindustries.com>

**Snap Medical Industries, LLC
545 Metro Place South, Suite 100
Dublin, OH 43017
Phone: (800) 875-4508**

EpinephrineSnap® IFU | 8/2022

DOSING GUIDANCE

| LBS | KG | mL's (dose) |
|------|-----|---|
| 2.2 | 1 | 0.01 mL (0.01 mg) |
| 4.4 | 2 | 0.02 mL (0.02 mg) |
| 6.6 | 3 | 0.03 mL (0.03 mg) |
| 8.8 | 4 | 0.04 mL (0.04 mg) |
| 11 | 5 | 0.05 mL (0.05 mg) |
| 13.2 | 6 | 0.06 mL (0.05 mg) |
| 15.4 | 7 | 0.07 mL (0.07 mg) |
| 17.6 | 8 | 0.08 mL (0.08 mg) |
| 19.8 | 9 | 0.09 mL (0.09 mg) |
| 22 | 10 | 0.1 mL (0.1 mg) |
| 24.2 | 11 | 0.11 mL (0.11 mg) |
| 26.4 | 12 | 0.12 mL (0.12 mg) |
| 28.6 | 13 | 0.13 mL (0.13 mg) |
| 30.8 | 14 | 0.14 mL (0.14 mg) |
| 33 | 15 | 0.15 mL (0.15 mg) |
| 66 | 30 | 0.3 mL (0.3 mg) Maximum single dose for Child |
| 88 | 40 | 0.4 mL (0.4 mg) |
| 110+ | 50+ | 0.5 mL (0.5 mg) Maximum single dose for Adult |